

32mm Glass Transponder

Read Only, Read/Write

Reference Guide

Edition One - May 2000

This is the first edition of this manual, it describes the following transponders:

RI-TRP-RR2B 32 mm Glass Transponder Read Only

RI-TRP-WR2B 32 mm Glass Transponder Read/Write

Important Notice

Texas Instruments (TI) reserves the right to make changes to its products or services or to discontinue any product or service at any time without notice. TI provides customer assistance in various technical areas, but does not have full access to data concerning the use and applications of customer's products.

Therefore, TI assumes no liability and is not responsible for customer applications or product or software design or performance relating to systems or applications incorporating TI products. In addition, TI assumes no liability and is not responsible for infringement of patents and/or any other intellectual or industrial property rights of third parties, which may result from assistance provided by TI.

TI products are not designed, intended, authorized or warranted to be suitable for life support applications or any other life critical applications which could involve potential risk of death, personal injury or severe property or environmental damage.

The **TIRIS** logo and the word **TIRIS** are registered trademarks of Texas Instruments Incorporated.

Copyright © 2000 Texas Instruments Incorporated (TI)

This document may be downloaded onto a computer, stored and duplicated as necessary to support the use of the related TI product. Any other type of duplication, circulation or storage on data carriers in any manner not authorized by TI represents a violation of the applicable copyright laws and shall be prosecuted.

Read This First

About This Guide

This guide describes the Read Only and Read/Write version of the 32mm Glass Transponder, and gives an overview of the most important specifications.

Conventions



WARNING:

A WARNING IS USED WHERE CARE MUST BE TAKEN OR A CERTAIN PROCEDURE MUST BE FOLLOWED, IN ORDER TO PREVENT INJURY OR HARM TO YOUR HEALTH.



CAUTION:

This indicates information on conditions which must be met, or a procedure which must be followed, which if not heeded could cause permanent damage to the equipment or software.



Note:

Indicates conditions which must be met, or procedures which must be followed, to ensure proper functioning of the equipment or software.



Information:

Indicates information which makes usage of the equipment or software easier.

If You Need Assistance

Application Centers are located in Europe, North and South America, the Far East and Australia to provide direct support. For more information, please contact your Distributor or nearest TIRIS Sales and Application Center. The contact addresses can be found on our home page: <http://www.tiris.com>

Document Overview

Preface: Read This First	3
Chapter 1: Product Description	5
1.1 General	6
1.2 Product Codes	6
1.3 Functions	7
1.3.1 Read (Read Only and Read/Write Transponders)	7
1.3.2 Write and Program.....	8
Chapter 2: Specifications	9
2.1 Mechanical Data	10
2.1.1 Dimensions	10
2.1.2 Vibration.....	10
2.1.3 Mechanical Shock.....	10
2.1.4 Break Force	11
2.2 Electrical Data	11
2.2.1 Memory	11
2.2.2 Operating Conditions	11
Chapter 3: Regulatory and Warranty Notices	13
3.1 Regulatory Notes	14
3.1.1 General	14
3.1.2 CE Conformity	14
3.2 Warranty and Liability	14
APPENDIX A: Terms & Abbreviations	15

List of Figures

Figure 1: System Configuration	6
Figure 2: FM principle used for the Read Function of TIRIS Transponders	7
Figure 3: Read Data Format of TIRIS RO Transponder	8
Figure 4: Read Data Format of TIRIS R/W Transponder	8
Figure 5: Dimensions of the 32 mm Glass Transponder (Read Only, Read/Write)	10

Product Description

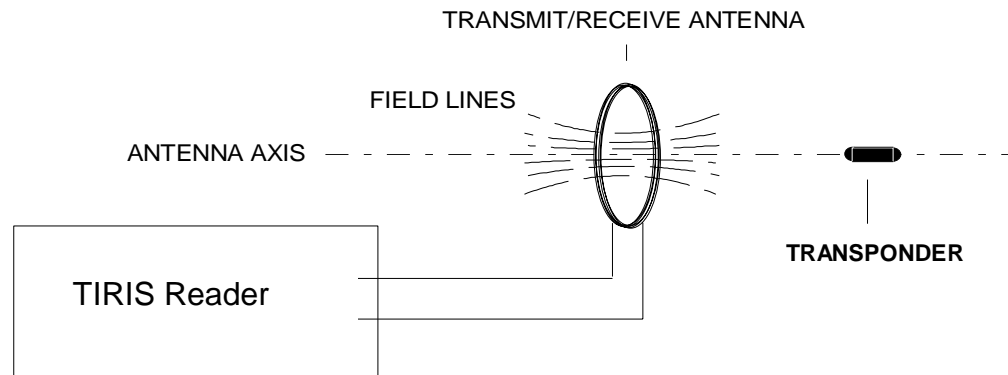
This chapter describes the RFID System and the functions of the 32mm Read Only and Read/Write Glass Transponder.

Topic	Page
1.1 General.....	6
1.2 Product Codes	6
1.3 Functions.....	7
1.3.1 Read (Read Only and Read/Write Transponders)	7
1.3.2 Write and Program.....	8

1.1 General

A TIRIS RFID system comprises a reader, an antenna and a transponder.

Figure 1: System Configuration



The reader and the transponder operate in a sequential mode with timely separated power and data transmission cycles.

1.2 Product Codes

<u>Function</u>	<u>Product Code</u>
Read Only	RI-TRP-RR2B-xx
Read Write	RI-TRP-WR2B-xx

Note: 'xx' defines the revision

The Read Only type is factory programmed with a unique number.

The Read/Write version can be programmed by the user.

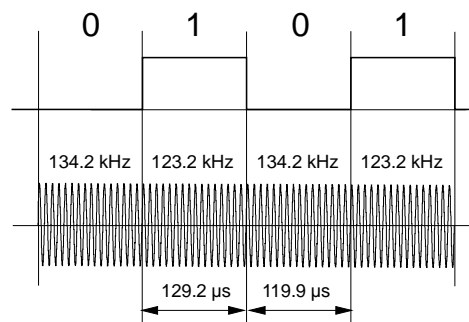
1.3 Functions

1.3.1 Read (Read Only and Read/Write Transponders)

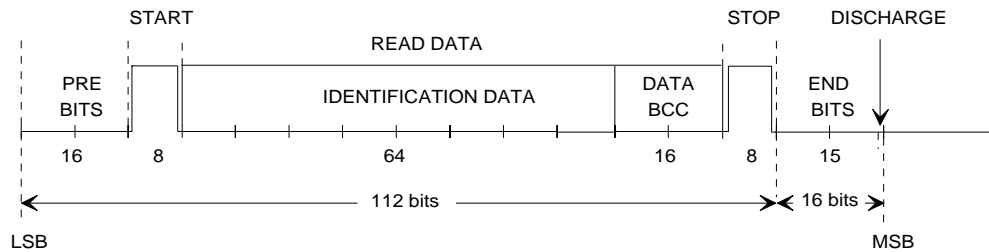
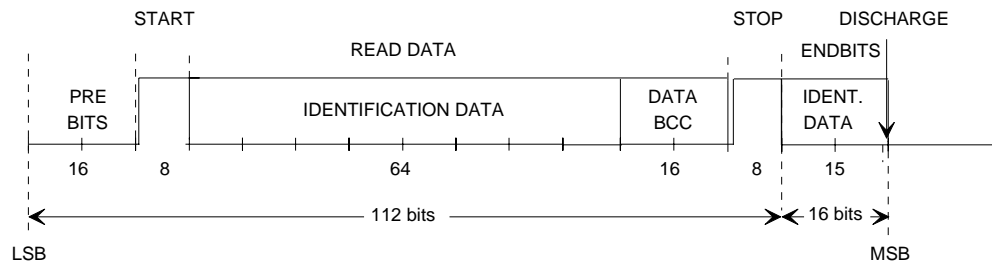
During the charge (or powering phase) of between 15 and typically 50 ms the interrogator generates an electromagnetic field using a frequency of 134.2 kHz. The resonant circuit of the transponder is energized and the induced voltage is rectified by the integrated circuit to charge the capacitor. The transponder detects the end of the charge burst and transmits its data using Frequency Shift Keying (FSK), utilizing the energy stored in the capacitor. The charge phase is followed directly by the read phase (Read mode). After transmission of the data format the capacitor is discharged.

The typical data low bit frequency is 134.2 kHz, the typical data high bit frequency is 123.2 kHz. The low and high bits have different duration, because each bit takes 16 RF cycles to transmit. The high bit has a typical duration of 130 μ s, the low bit of 119 μ s. Figure 2 shows the FM principle used. Regardless of the number of low and high bits, the transponder response duration is always less than 20 ms.

Figure 2: FM principle used for the Read Function of TIRIS Transponders



The data format consists of 128 bits. Different start/stop bytes and end bits are used, to allow secure distinction between RO and R/W Transponder. Figure 3 and Figure 4 show the format of the received data for RO and R/W transponders.

Figure 3: Read Data Format of TIRIS RO Transponder**Figure 4: Read Data Format of TIRIS R/W Transponder**

1.3.2 Write and Program

A new identification number can be written (programmed) into a R/W transponder in the following manner: After the charge phase the R/W transponder enters the write mode providing the reader starts to modulate the field by switching the transmitter on and off. Modulation index of this amplitude modulation is 100%. The duration of the off-phase defines whether a low bit or a high bit is being transmitted (Pulse Width Modulation). Writing means, the transponder shifts the received bits into a shift register. After the write phase the reader's transmitter is switched on for a certain time (programming time) in order to energize the process of programming the shift register data into the EEPROM. All 80 bits are programmed simultaneously into the EEPROM. Once the data is programmed into the EEPROM the transponder automatically sends back the captured data to the reader to allow a security check, this process takes place when the transmitter is switched off.

Specifications



This chapter lists the operating conditions, electrical and mechanical characteristics and dimensions.

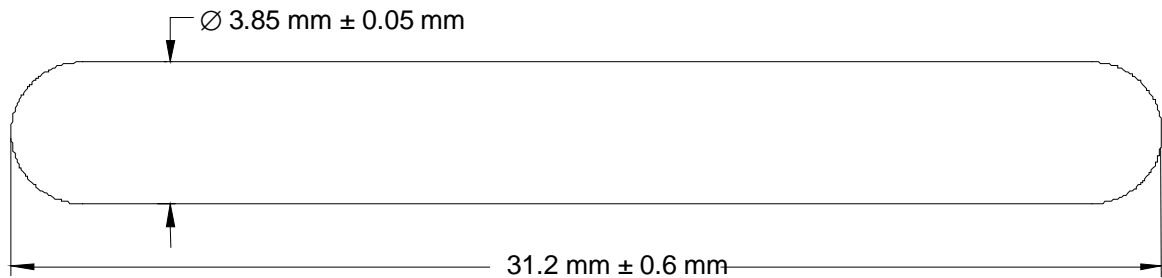
Topic	Page
2.1 Mechanical Data	10
2.1.1 Dimensions	10
2.1.2 Vibration.....	10
2.1.3 Mechanical Shock.....	10
2.1.4 Break Force.....	11
2.2 Electrical Data.....	11
2.2.1 Memory.....	11
2.2.2 Operating Conditions.....	11

2.1 Mechanical Data

2.1.1 Dimensions

	Limits			Unit
	Min.	Typical	Max.	
Length	30.6	31.2	31.8	mm
Diameter	3.8	3.85	3.9	mm
Weight	0.7	0.8	0.9	gr.
Case Material	Glass			
Protection Class	Hermetically sealed			

Figure 5: Dimensions of the 32 mm Glass Transponder (Read Only, Read/Write)



2.1.2 Vibration

Vibration test according IEC 68-2-6, test Fc.

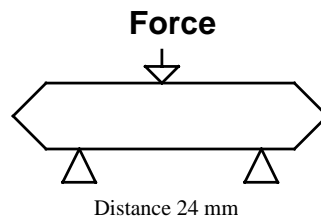
Conditions: Acceleration 10 g
Frequency 10-500 Hz
4 hours per axis

2.1.3 Mechanical Shock

Mechanical shock test according IEC 68-2-27, test Ea.

Conditions: Acceleration 200 g half-sine
Time 3 ms per axis

2.1.4 Break Force



Minimum force: 30 N
 Force Built-up speed: 20 mm/min

2.2 Electrical Data

2.2.1 Memory

Parameter	Data
Memory size	80 bit
Memory organization	1 block
Identification data	64 bit
Error detection (Data BCC)	CRC – CCITT, 16 bit

2.2.2 Operating Conditions

Parameter	Limits		
	min.	max.	Unit
Operating Temperature (Read)	-25	+ 85	°C
Operating Temperature (Write)	-25	+ 70	°C
Storage Temperature	- 40	+ 100	°C
Storage Temperature (for total 1000 hours)		+ 125	°C
ESD Susceptibility (IEC 801-2)	15		kV
EM Radiation Immunity 1 – 512 MHz	100		V/m
EM Radiation Immunity 512 – 1000 MHz	50		V/m
X-ray Dose at 110 kV		2000	RAD

Parameters	Limits						Unit
	+ 25°C			- 25°C to +70 (85) °C			
	Min.	typ.	max.	min.	typ.	max.	
Charge duration for read and write				15	50		ms
Charge frequency for read and write				134.16	134.2	134.24	
Activation Field Strength (AFS)	178.0			188.0			dBμV/m
Programming time				15			ms
Programming Field Strength	184.0			194.0			dBμV/m
Operating quality factor				62			
Low Bit Frequency f _L	132.2		136.2	132.0		138.0	kHz
High Bit Frequency f _H	121.0		125.0	120.0		127.0	kHz
FSK Modulation index (read); f _L - f _H		11.0		9.0		15.0	kHz
Output Field Strength at d = 50 mm and using above AFS				132.0		154.0	dBμV/m
Programming cycles	100k						cycles
Data retention time	10						years



Information:

The charge duration has an influence on the reading range and a reduction from the typical value to the minimum will result in a decrease of reading range.

Regulatory and Warranty Notices

Topic	Page
3.1 Regulatory Notes	14
3.1.1 General	14
3.1.2 CE Conformity.....	14
3.2 Warranty and Liability	14

3.1 Regulatory Notes

3.1.1 General

An RFID system comprises an RF transmission device, and is therefore subject to national and international regulations.

TI has obtained approvals for this equipment from approval authorities in a number of countries and is continuing to apply for approvals in further countries. Actual status for a given product can be advised by TIRIS sales offices.

A system containing these transponders may be operated only under an experimental license or final approval issued by the relevant approval authority. Before any such device or system can be marketed, an equipment authorization must be obtained from the relevant approval authority.

3.1.2 CE Conformity

A CE Declaration of Conformity is available for these transponders through TIRIS Sales Offices.

3.2 Warranty and Liability

The "General Conditions of Sale and Delivery" of Texas Instruments Incorporated or a TI subsidiary apply. Warranty and liability claims for defect products, injuries to persons and property damages are void if they are the result of one or more of the following causes:

- improper use of the transponders
- unauthorized assembly, operation and maintenance of the transponders
- operation of the transponders with defective and/or non-functioning safety and protective equipment
- failure to observe the instructions during transport, storage, assembly, operation, maintenance and setting up of the transponders
- unauthorized changes to the transponders
- insufficient monitoring of the transponders' operation or environmental conditions
- improperly conducted repairs
- catastrophes caused by foreign bodies and acts of God.

Terms & Abbreviations

The list of the abbreviations and terms used in various TIRIS manuals can now be found in a separate manual:

TIRIS Product Manuals - Terms & Abbreviations

Document number 11-03-21-002